

CODEMA

SIEVE CLEANER

PRODUCT CATALOG

High Efficiency Cleaning Solutions

THE SP CLEANER (Patent No. U.S. 6095339)

With an already well-proven perimeter shape, the SP Cleaner (for simultaneous sieve & pan cleaning) is the result of many recent mill trials and subsequent design updates.

The most notable of these are the reinforced corners and protective barriers around the bristle tips.

The SP cleaner can be used in Buhler sifters (such as the Sirius line) utilizing sieves without backwires.



Available in:

Black Bristle — Order No. SIF-SIE-01221

White Bristle — Order No. SIF-SIE-01225

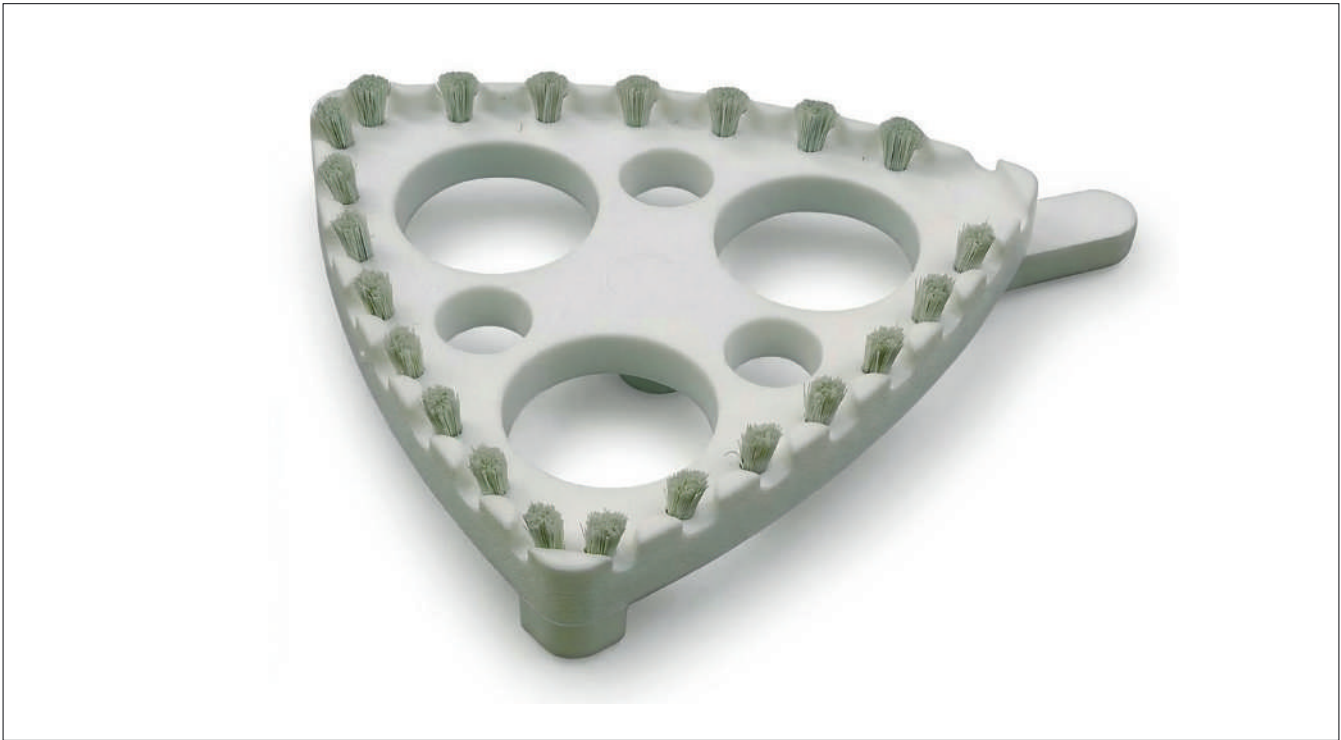
With Studs — Order No. SIF-SIE-01223

SP: THE 21ST CENTURY SIEVE CLEANER

Because sifter efficiency is directly related to the proper cleaning of the sifting surface, choosing the right sieve cleaner is essential for consistently high sifter throughput. A sieve cleaner cleans most efficiently at its outer perimeter, thus making the shape and surface area of the cleaner very important.

For many years, the “arched” triangular form has been recognized worldwide as the most efficient shape for this purpose. Today, this shape has been modified and optimized for a new generation of plansifters.

With an already well-proven perimeter shape, the SP Cleaner is the result of many recent mill trials and subsequent design updates. The most notable of these are the reinforced corners and protective barriers around the bristle tips.



The field tests have been remarkable and these cleaners are now available for anyone wanting to increase their sifting efficiency.

Because of the many types of products that are sifted and the numerous styles of bolting cloth available, the SP Cleaners come in several configurations: molded stud and brush tip style.

Cleaners with molded studs are used for general-purpose sieve cleaning of wire mesh and synthetic cloths from 200 microns and up, while cleaners with a bristled brush tip are designed to provide a more thorough cleaning of most synthetic cloths, especially those under 200 μm .

This style is also recommended for more aggressive cleaning applications, especially when sticky product is being sifted and where wire mesh sieve cloth is being used.

The relatively large size of each cleaner provides a dramatic increase in cloth cleaning coverage (up to 30% over typical cleaners on the market) and is especially effective when cleaning the hard-to-reach corners of sieve compartments—great news for making sifting more productive.

SP Cleaners are excellent for use in Buhler NOVA sieves.

SP CLEANERS: Proven in the Field

- ✔ Simultaneous sieve and pan cleaning without the use of a frame-mounted backwire
- ✔ Consistent, efficient cleaning that covers the entire cloth surface, including hard to reach corners
- ✔ Larger cleaner surface area and cloth coverage compared to other cleaners
- ✔ More contact points on the cleaner's triangular surface keep the cleaner parallel to the sieve and eliminate binding
- ✔ Cleaners available with molded cleats or white bristles, covering a wide range of cleaning options

SIEVE CLEANER PRODUCT LIST

Molded Stud

This cleaner is molded in one piece, including the projecting studs, and is effective for all wire mesh and synthetic cloths from 200 micron and upwards. This is our general-purpose model, with the small version being our most popular cleaner.



Available with plastic slider knob

Small: 22.1g — Order No. SIF-SIE-01180

Large: 29.6g — Order No. SIF-SIE-01140

Available with metal slider knob

Small: 22.1g — Order No. SIF-SIE-01170

Large: 29.6g — Order No. SIF-SIE-01130

White Bristle

This model provides a higher degree of cleaning efficiency over the molded stud model and is best suited for synthetic cloths.

The sterilized bristles are held in place by a durable magnetic wire which is set completely into the cleaner body and can be recovered by magnets if separation should occur.



Available in:

Small: 26.5g — Order No. SIF-SIE-01224

Large: 33.0g — Order No. SIF-SIE-01150

Black Bristle

This cleaner provides the highest degree of cleaning efficiency and is used primarily for wire mesh cloths or areas where aggressive cleaning is required.

Like the white bristle model, its bristles are held in place by a durable magnetic wire which is set completely into the cleaner body and can be recovered by magnets if separation should occur.



Available in:

Small: 27.1g — Order No. SIF-SIE-01160

Large: 33.1g — Order No. SIF-SIE-01200

Pan Cleaners

Pan cleaners are molded using the same FDA approved polyurethane as our triangular sieve cleaners and are available in two models:

1.) Solid Diamond (Small)

This pan cleaner offers effective cleaning in a compact diamond-shaped design and holds its shape and elasticity even over long continuous use.

This size is best suited for MIAG style sifters or other sifters with small compartments.



Order No.

SIF-PAN-01010

2.) Hollow Diamond (Large)

This pan cleaner yields the ultimate in cleaning for standard size sifter compartments while minimizing frame wear.

Because of its larger dimensions (compared to the solid diamond style), this model has a molded cutout in the center to reduce weight and therefore maximize cleaning efficiency and product movement over the entire pan surface.



Order No.

SIF-PAN-01000

BLUE LINE

As we all know, blue is the only colour that does not occur naturally in cereal-based foodstuffs. With this and ever-increasing hygiene requirements in mind, millwrights and grinding mills alike are becoming more and more interested in the idea of blue sieve cleaners. This is why we have now made our bestsellers available in blue plastic, which – of course – complies with FDA and EU requirements for food grade products. Similarly, we are now also using blue nylon in our sieve cleaning brushes to ensure maximum visual detectability.

Blue Line – Double Cleaner for plansifter sieves without backwire

1.) Sieve Cleaning Brush for flour sieves

SIF-SIE-01300 - with blue Nylon for synthetic mesh with a mesh opening of 90 – 250 µm



2.) Sieve Cleaner With Studs for primary sieves

SIF-SIE-01301 for wire and synthetic mesh with a mesh opening of more than 250 µm



Blue Line – Sieve Cleaner for plansifter sieves with backwire)

1.) Sieve Cleaning Brush, Small Model With Solid Stainless Steel Slider Knob for flour sieves with a standard sieve field (e. g. 23 x 17 mm)

SIF-SIE-01302 with blue Nylon for synthetic mesh with a mesh opening of 90 – 250 µm



2.) Sieve Cleaner With Studs, Small Model for primary sieves with a standard sieve field (e. g. 23 x 17 mm)

SIF-SIE-01303 with solid stainless steel slider knob for a mesh opening of more than 250 µm

SIF-SIE-01304 with plastic slider knob for a mesh opening of more than 250 µm



PAN CLEANER for plansifter sieves with backwire for sieve pans

SIF-SIE-01305 with recess



Codema has a variety of sieve & pan cleaners available for the most demanding sieve applications, including the new SP Sieve & Pan cleaner.

All triangular sieve cleaners start out with a durable yet elastic body material of high quality polyurethane meeting FDA specification no. 175.105, which means you can be assured of meeting food safety standards in your plant.

Certain models of the standard cleaners are then fitted with a metal slider rivet that promotes dynamic, rivet vibratory movement without coming loose.

These cleaners will not become brittle and break apart with age, ensuring a long life of effective cleaning with a minimum of frame wear, product contamination and little or no fumigant absorption.



CODEMA

+1 763 428 2266

info@codemallc.com

www.codemallc.com

11790 Troy Ln N Maple Grove, MN 55369 United States